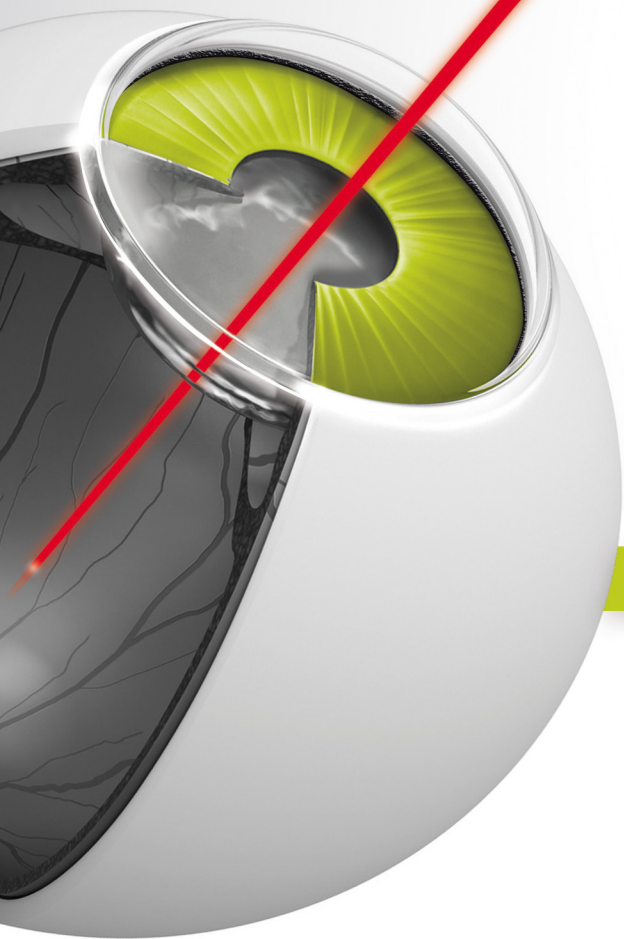


vitra[®] PDT

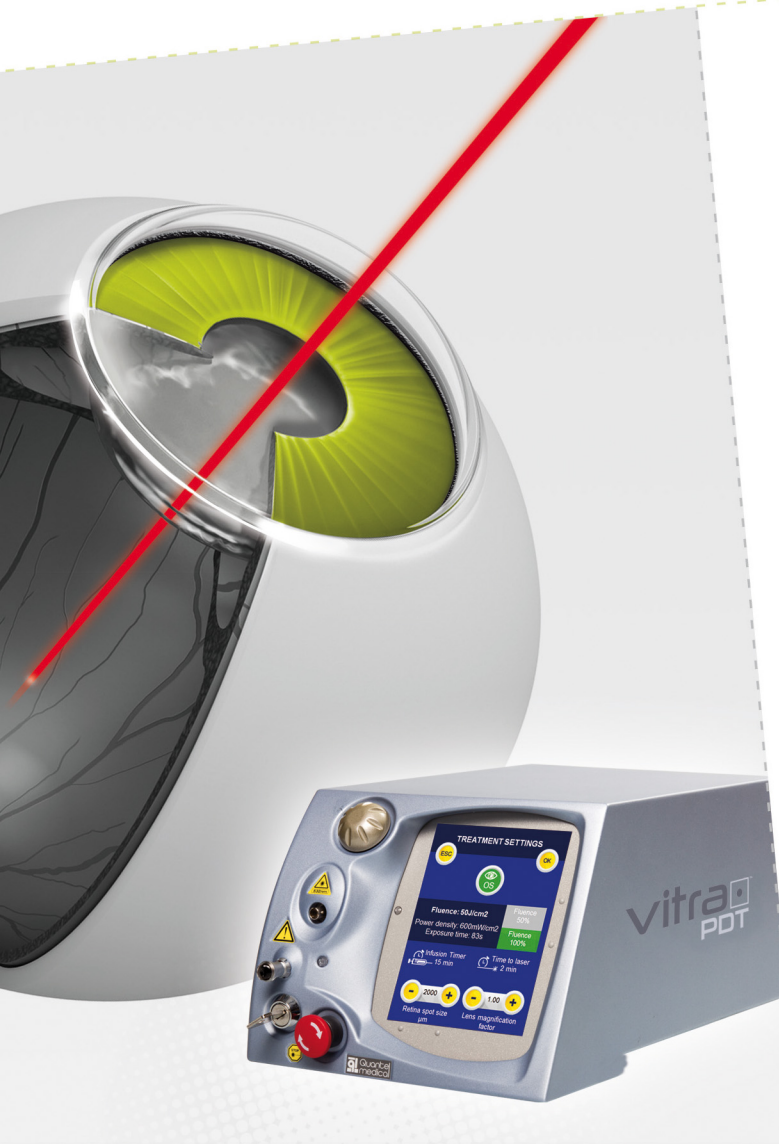
Next Generation PDT Laser



Red 689nm Laser for Photodynamic Therapy

vitra[®] PDT

TECHNICAL SPECIFICATIONS



VITRA PDT SPECIFICATIONS

Laser source:	Semiconductor laser diode
Wavelength:	689nm +/- 3nm
Output Power:	Variable to meet 600mW/cm ² at selected spot size
Maximum Power:	400mW
Exposure Time:	83s
Aiming beam:	650nm
Size:	14.5 (H) x 18.5 (W) x 30 (D) cm 5.7" (H) x 7.3" (W) x 11.8" (D)
Weight:	4.8kg – 10.6lbs
Cooling:	Air
Power requirements:	100 to 240 VAC, 250 VA, 50/60 Hz

SLIT LAMP ADAPTER

Slit lamp compatibility:	Quantel Medical slit lamp, Haag Streit 900 BM & BQ and clones
Zoom:	Motorized
Spot size:	Continuously adjustable from 1200 to 5400µm (Up to 7200µm with a magnifying contact lens)
Weight:	0.9kg – 1.98lbs

Specifications are subject to change without notice.

www.quantel-medical.com

Designed and Manufactured by **Quantel Medical in France**

DANGER



LASER RADIATION WHEN OPEN
Avoid eye or skin exposure to direct or scattered radiation

Diode 689nm 600 mW Avg.
CLASS IIIb LASER PRODUCT



LASER CLASS 3B
Laser Diode : 689nm, 600mW Max

LASER CLASS 2
Diode Laser : 635nm, <1mW Max

VISIBLE AND/OR INVISIBLE LASER RADIATION
AVOID EYE OR SKIN EXPOSURE TO DIRECT OR SCATTERED RADIATION

CLASS 3B LASER PRODUCT per IEC 60825-1:2007 + AC1:2008
Complies with 21 CFR 1040.10 and 1040.11 except for deviations pursuant to Laser Notice No.50, dated June 24, 2007

CE
0459
ISO 9001-13485

Headquarters
Quantel Medical
11, rue du Bois Joli - CS40015
63808 Cournon d'Auvergne – FRANCE
Tel: +33 (0)4 73 745 745
Fax: +33 (0)4 73 745 700
E-mail: contact@quantel-medical.fr

North America
Quantel USA
601 Haggerty Lane
Bozeman, MT 59715 – USA
Tel: +1 877 782 6835
Fax: +1 406 522 2005
E-mail: info@quantelmedical.com

Representative Offices
Thailand, Chiang Mai
Brazil, Rio De Janeiro

 **Quante**
medical