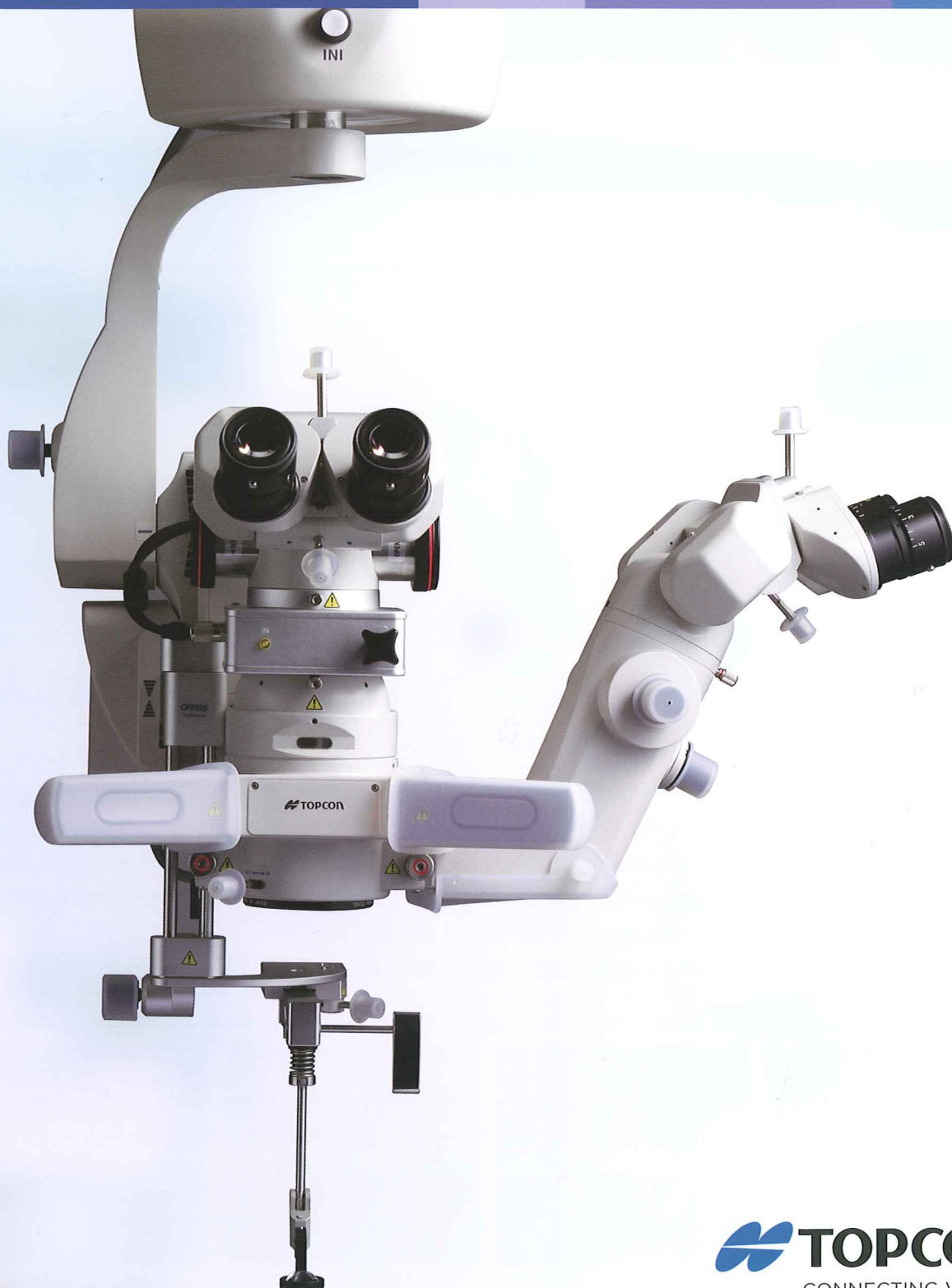


# Operation Microscope

## OMS-800/850

OFFISS / Pro / Standard (800)





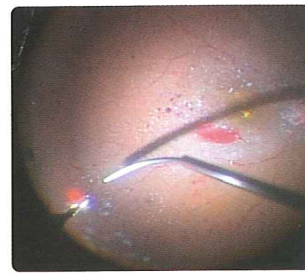
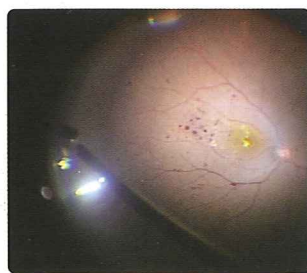
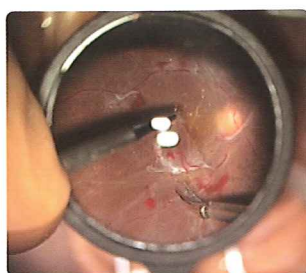
**OMS-800 / 850**

OFFISS / Pro / Standard (800)

## Perfection for Professionals

### Bright Wide Field

The Topcon OMS-800 Operation Microscope, known by its breakthrough technology and outstanding wide field, expands its view even further, allowing the surgeon to visualize as far as the Ora Serrata for vitreo retinal surgery, while maintaining clear and precise detail throughout the surgical field. Topcon's pursuit for perfection, continues in the developing of its models OMS-800 and OMS-850 of operating microscopes, adapting them to the needs of modern ophthalmic procedures consistent with the tradition of high quality and durability that made Topcon the World Leader in Ophthalmic Equipment.







# TOPCON OFFISS LENS

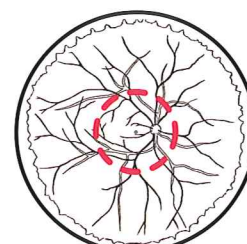
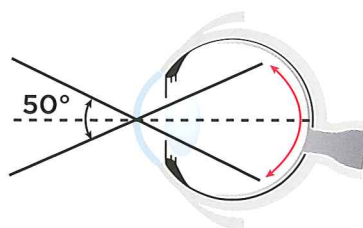
## OFFISS



TOPCON has developed a state-of-art observation system for vitrectomy procedures that does not require the use of fiberoptic illumination. The TOPCON OFFISS system does not require the complicated focusing since the microscope head and the front lens move independently of each other facilitating clear focus in virtually any situation. The image inverter will activate automatically whenever the OFFISS is in use. The front lens can be easily replaced with a simple operation, saving time and increasing efficiency. Also, the new 80D and 120DS front lenses expand the selection for the various needs of retinal surgery. All front lenses are now autoclavable so shorter sterilization time (about 5 min.) is required for a more efficient performance of the surgical suite.

### » 40D Lens

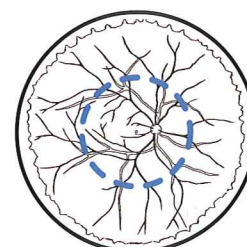
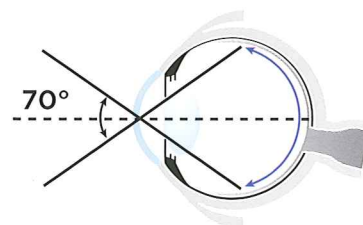
Excellent stereoscopy and a bright image are the characteristics of the 40D lens, making it suitable for procedures in the posterior segment. The microscope illumination enables the observation of the retina, making unnecessary the use of a fiber optic illumination. The result is that the surgeon is able to perform bimanual procedures, saving time.



Vascular Arcade

### » 80D Lens

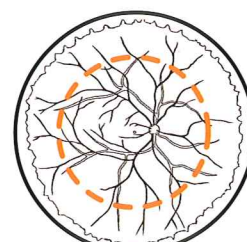
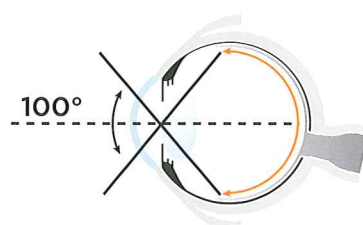
The observation from posterior segment to the intermediate peripheral zone of retina is possible with the 80D lens. This lens can also be used in combination with fiber optic illumination.



Intermediate peripheral zone

### » 120DS Lens

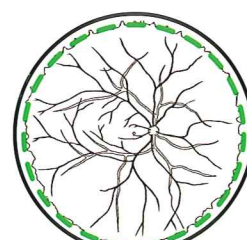
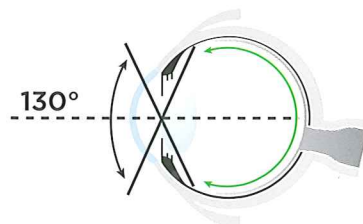
This compact lens of smaller size takes less space in the operating field and does not interfere with the use of surgical instruments. A wide angle observation of up to 100 degrees is possible under normal conditions. If air substitution is used, the angle can be expanded up to approximately 130 degrees.



Equator

### » 120D Lens

Useful for vitreous surgery and photocoagulation of the central and peripheral areas up to the Ora Serrata, the 120D lens provides a field of view of 130 degrees with good stereoscopic image. This lens can be used under air substitution in combination with a wide angle fiber optic endoilluminator.



Ora Serrata



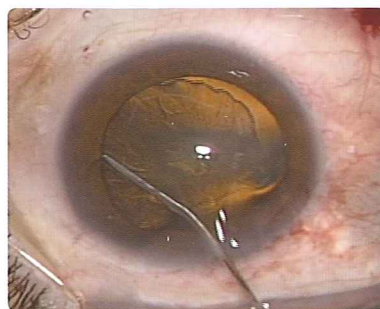
# FOR CATARACT SURGERY

## » Superb image quality for cataract surgery

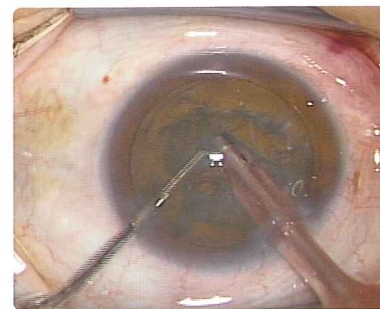
With the advancement of cataract surgery and phacoemulsification techniques, an increasing number of surgeons are performing simultaneous cataract and vitreous surgeries. By using a three direction illumination system, the OMS-800 provides an improved red reflex with better shadow and contrast even in low illumination conditions.



CCC



Hydrodissection



PEA



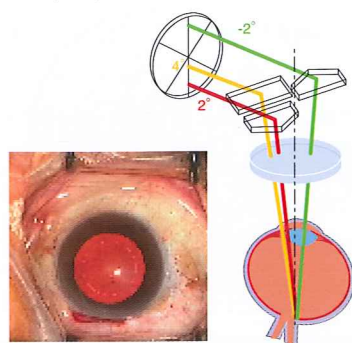
# THREE ILLUMINATION PATTERNS

## » A selection of illumination angles

Three different types of illumination angles are available to meet any lighting needs during surgery. Each mode can be easily selected from the footswitch.

### Fully Illuminated

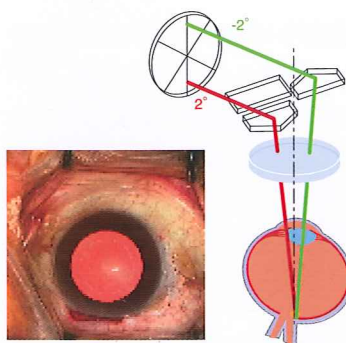
(+4°, +2°, -2°)



In this mode, the illumination, brightness, stereoscopic view and shadow contrast are perfectly balanced for superior observation clarity. The illumination is always convenient regardless of the position of the patient's eye.

### Plus and Minus

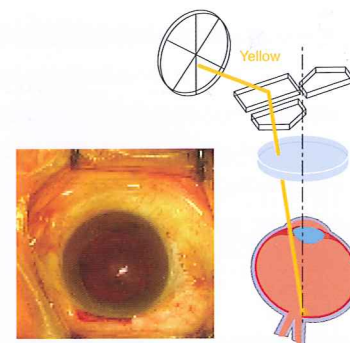
(-2°, +2°)



This illumination mode creates a good red-reflex, and is very useful in anterior capsulotomy.

### Yellow Filter

(+4°)

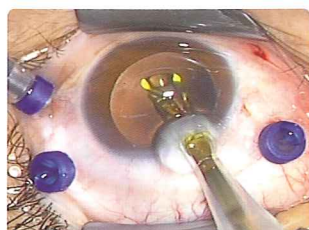


The combination of this illumination and yellow filter is of special advantage for preventing phototoxicity in long procedures.





# SUPERIOR FUNCTIONALITY



## Low illumination intensity enables clear observation, enhancing efficiency

Superbly designed optics provides adequate illumination allowing appropriate wavelength transfer and eliminating harmful or unnecessary brightness. Low light intensity also helps to prevent light-related damage to the retinal tissue. The incorporated IR cut filter also aids in the reduction of phototoxicity.



## Comfortable operating posture

The ergonomically designed optical head with built-in beam splitter and adjustable eye pieces allows the surgeon to maintain a comfortable posture throughout the surgery. A key component to this comfort is the variable angle binocular tubes that allow for the setting of a personal viewing position from 45 to 90 degrees. This flexibility assures a comfortable operating stance even when using OFFISS.

## Rough Focusing ※

Rough focusing mechanism allows the optical head to be quickly elevated during surgery and then brought back to the working position. This feature is particularly useful during IOL insertion and other procedures that momentarily require more space between the patient and the microscope.

## Anti stain coating lens

The OMS-800 employs anti-stain, water-shedding coating for all objective lenses and eyepieces. The optical components remain clean and maintain its quality for a longer time.

## Easy bulb exchange

The illumination bulb can be easily and immediately replaced by a rotating lever located in the lamp house. A warning lamp indicates when the spare lamp is burned out to insure always an operational bulb available.

## Electromagnetic locking system ※

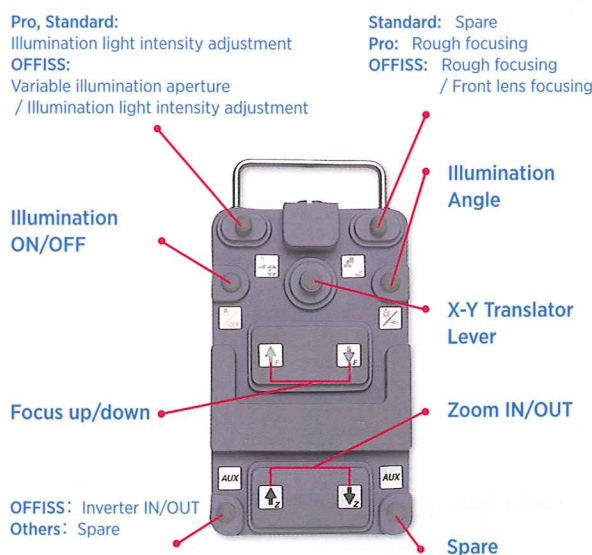
Reliable electromagnetic brakes enable the surgeon to quickly and accurately position the optical head during surgery. (OFFISS/Pro)

## Increased working distance

The OFFISS system provides an extremely comfortable working distance between the 40D non-contact lens and the patient's eye.

## Multifunction footswitch enhances operating efficiencies

The multi-function footswitch permits the surgeons to control virtually all of the OMS-800 functions without removing their hands from the operative field. Without any hand movement, the surgeon can adjust the illumination, zoom magnification, focus, illumination angle and X-Y positioning. On conventional microscopes, many of these functions have to be performed by assistants. The control layout on the footswitch is conveniently arranged in the most accepted configuration.





## OPTIONAL ACCESSORIES



### Front lens set

Standard components include; front lens holder, anterior segment observation lenses, 40D, 80D, 120D, and 120DS each one in its sterilizable box.

\* Each front lens can be ordered separately.



### Coaxial assistant microscopes

The assistant microscope provides the viewer with bright, crisp images that are in the same visual axis of the main surgeon. The angle of the binocular eyepieces is adjustable from 45 to 90 degrees, offering the assisting surgeon a comfortable viewing angle. In addition, a separate focus adjustment is available for the assistant surgeon.



### TV relay lens

The compact TV relay lens permits the attachment of a CCD camera useful for documentation and teaching. The relay lens accepts the most popular 1/2" and 1/3" CCD cameras with C mount or bayonet mount and it is easily connected to the OMS-800.



### Slit Illuminator



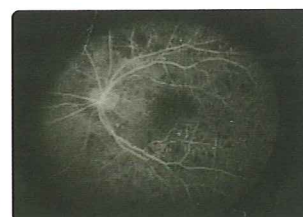
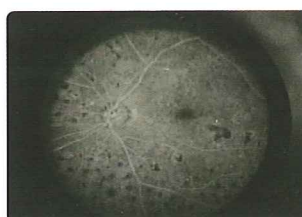
The MS-SI01 slit illuminator is a newly developed accessory geared to the corneal refractive surgeon to aid in the assesment of corneal interface in lamellar procedures such as DSAEK and DALK. It features an extremely thin slit beam of 50  $\mu$ m and a LED illumination source. It can also be used to observe corneal and anterior chamber depth in cataract surgery.

\* Microslit can be used in other brand microscopes.  
Please ask a Topcon representative for a list of variable models.

### Intra operative fluorescein observation

Dynamic intra operative fluorescein observation is possible by attaching the FAG filter assembly to the OMS-800 OFFISS. With this attachment the surgeon can have a fluorescein angiogram performed while the eye is being operated on, ascertaining the real condition of the retina at that time.

\* available with OMS-800/850 OFFISS only.







## OMS-800 OFFISS

OFFISS offers a New Scope of Possibilities in Intravitreal Surgery. Equipped with the OFFISS front lens mechanism, electromagnetic brakes and sophisticated electronics, this model is the highest standard for intra vitreal surgery, as well as other ophthalmic procedures.

## OMS-800 Pro

Electromagnetic brakes and sophisticated electronics confer the OMS-800 Pro the flexibility to perform virtually any type of ophthalmologic surgical procedures.



## OMS-800 Standard

Equipped with most of the state-of-the-art features of the 800 line, the OMS-800 Standard answers the need for a simpler, easy to use operation microscope. Manual brakes and ease of mobility make the OMS-800 an affordable yet advanced unit for all ophthalmic procedures.



## OMS-850 OFFISS / Pro

The ceiling model OMS-850 enables to utilize the operation theater floor efficiently. A cable pole is included as standard components so that several cables from TV or operation equipment could be corded neatly.

OMS-800 OFFISS/850 OFFISS CBS

The CBS system is a model with a changeable beam splitter. By switching a lever, the beam will be split by 80/20 or 50/50. When 50/50 is selected, TV camera will receive clearer images making this mode useful for documentations and teaching.

## Components

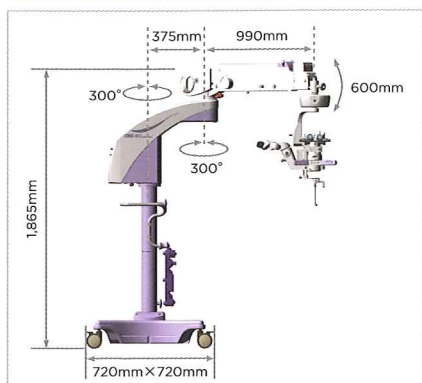
[illegible]

## Specifications

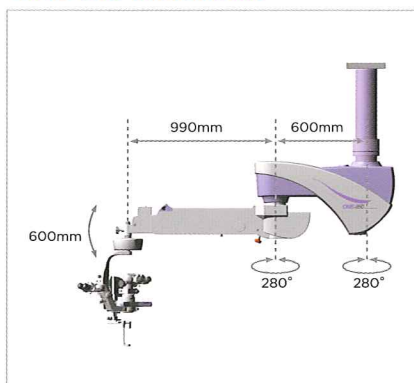
		OMS-800 OFFISS	OMS-800 Pro	OMS-800 Standard	OMS-850 OFFISS	OMS-850 Pro
		Floor Type			Ceiling Type	
Microscope type		Galileo type				
Magnification change type		Electric zoom continuous change				
Eyepiece (Eyepiece magnification)		12.5x				
Objective Lens		f=200mm				
Display magnification (x)		4.2/5/6/7/8/9/10/11/13/15/17/19/21				
Total magnification		4.2x~21x				
1st arm length (Distance between shafts)		375mm			600mm	
1st arm rotation range		300°			280°	
2nd arm length (Distance between shafts)		990mm	875mm		990mm	
2nd arm rotation range		300°			280°	
2nd arm vertical movement range		600mm				
2nd arm mounting weight		6kg-18kg	9kg-21kg		6kg-18kg	
Power Suply		AC 100-120V/ 220-240V, 50-60Hz 280VA				
Dimensions	Base (Base unit)	720mm(W) × 720mm(D)			—	
	Base (Base total height)	1,865mm			—	
Weight		250kg	247kg	244kg	226kg	223kg
Permitted weight for accessories		4.8(4.4)* kg	6.8(6.4)* kg	7.3(6.9)* kg	4.8(4.4)* kg	6.8(6.4)* kg

\* ( ) CBS type

### OMS-800 Dimensions



### OMS-850 Dimensions



Photos Courtesy of: Professor Masayuki Horiguchi, MD Ophthalmology Department Fujita Health University

Associated Professor Kiyoshi Suzuma, MD Department of Ophthalmology and Visual Science, Graduate school of Biomedical science, Nagasaki University



\*Subject to change in design and/or specifications without advanced notice.  
In compliance with the terms of the Export Administration Regulation of the United States of America, this product may not be available in some regions or countries.

#### IMPORTANT

In order to obtain the best results with this instrument, please be sure to review all user instructions prior to operation.



TOPCON CORPORATION



TOPCON CORPORATION



EC9711081



### TOPCON CORPORATION

75-1 Hasunuma-cho, Itabashi-ku, Tokyo 174-8580, Japan. Phone: 3-3558-2523/2522 Fax: 3-3965-6898 www.topcon.co.jp

#### TOPCON MEDICAL SYSTEMS, INC.

111 Bauer Drive, Oakland, NJ 07436, U.S.A.  
Phone: +1-201-599-5100 Fax: +1-201-599-5250 www.topconmedical.com

#### TOPCON CANADA INC.

110 Provencher Avenue, Boisbriand, QC J7G 1N1 CANADA  
Phone: +1-450-430-7771 Fax: +1-450-430-6457 www.topcon.ca

#### TOPCON EUROPE MEDICAL B.V.

Essebaan 11; 2908 LJ Capelle a/d IJssel; P.O.Box 145;  
2900 AC Capelle a/d IJssel; THE NETHERLANDS  
Phone: +31-(0)10-4585077 Fax: +31-(0)10-4585045  
E-mail: medical@topcon.nl; www.topcon.eu

#### ITALY OFFICE

Viale dell'Industria 60; 20037 Paderno Dugnano; (Milano), ITALY  
Phone: +39-02-9186671 Fax: +39-02-91081091 E-mail: topconitaly@tiscali.it; www.topcon.it

#### DANMARK OFFICE

Praestemarksvvej 25; 4000 Roskilde, DANMARK  
Phone: +45-46-327500 Fax: +45-46-327555  
E-mail: topcon@topcondanmark.dk www.topcondanmark.dk

#### IRELAND OFFICE

Unit 276, Blanchardstown; Corporate Park 2 Ballycoolin Dublin 15, IRELAND  
Phone: +353-18975900 Fax: +353-18293915 E-mail: medical@topcon.ie; www.topcon.ie

#### TOPCON S.A.R.L.

89, rue de Paris 92585 Cligny, FRANCE  
Phone: +33-(0)1-41069494 Fax: +33-(0)1-47390251 E-mail: topcon@topcon.fr; www.topcon.fr

#### TOPCON DEUTSCHLAND G.m.b.H.

Hanns-Martin-Schleyer Strasse 41; D-47877 Willich, GERMANY  
Phone: +49-(0)2154-8850 Fax: +49-(0)2154-885177 E-mail: medica@topcon.de; www.topcon.de

#### TOPCON SCANDINAVIA A.B.

Neogatan 2; P.O.Box 25; 43151 Mölndal, SWEDEN  
Phone: +46-(0)31-7109200 Fax: +46-(0)31-7109249 E-mail: medical@topcon.se; www.topcon.se

#### TOPCON ESPAÑA S.A.

HEAD OFFICE  
Frederic Mompou 4 Esc. A Bajos 3, 08960 Sant Just Desvern Barcelona, SPAIN  
Phone: +34-93-4734057 Fax: +34-93-4733932 E-mail: medica@topcon.es; www.topcon.es

#### PORTUGAL OFFICE

Rua da Fonte, 8-6A L-0-22-2799-072 Carnaxide, PORTUGAL  
Phone: +351-210-994626 Fax: +351-210-938786 www.topcon.pt

#### TOPCON ( GREAT BRITAIN ) LTD.

Topcon House, Kennet Side, Bone Lane, Newbury Berkshire RG14 5PX United Kingdom  
Phone: +44-(0)1635-551120 Fax: +44-(0)1635-551170 E-mail: medical@topcon.co.uk; www.topcon.co.uk

#### TOPCON POLSKA Sp. z o.o.

ul. Warszawska 23; 42-470 Siewierz, POLAND  
Phone: +48-(0)32-6705045 Fax: +48-(0)32-6713405 www.topcon-polska.pl

#### TOPCON SINGAPORE MEDICAL PTE. LTD.

60 Alexandra Terrace, #08-27 The Comtech, Singapore 118502  
Phone: +65-68720606 Fax: +65-67736150 E-mail: medical\_sales@topcon.com.sg www.topcon.com.sg

#### TOPCON INSTRUMENTS ( MALAYSIA ) SDN.BHD.

No. D1, (Ground Floor), Jalan Excella 2, Off Jalan Ampang Putra,  
Taman Ampang Hilir, 55100 Kuala Lumpur, MALAYSIA  
Phone: +60-(0)3-42709866 Fax: +60-(0)3-42709766

#### TOPCON INSTRUMENTS ( THAILAND ) CO.,LTD.

77/162 Sinnsathorn Tower, 37th Floor, Krungthoburi Rd., Klongtongsa,  
Klongsarn, Bangkok 10600, THAILAND  
Phone: +66-(0)2-440-1152-7 Fax: +66-(0)2-440-1158

#### TOPCON CORPORATION BEIJING OFFICE

Block No.9, Kangding Street Beijing Economic-Technological Development Area,  
Beijing, 100176, CHINA  
Phone: +86-(0)10-6780-2799 Fax: +86-(0)10-6780-2790

#### TOPCON CORPORATION SHANGHAI OFFICE

14L Huamin Empire Plaza, No.726, Yan-an Xi Road,  
Shanghai, 200050, CHINA  
Phone: +86-(0)21-5238-7722 Fax: +86-(0)21-5237-0761

#### TOPCON CORPORATION BEIRUT OFFICE

P.O.Box 70-1002 Antelias, Beirut, LEBANON  
Phone: +961-4-523525/523526 Fax: +961-4-521119

#### TOPCON CORPORATION DUBAI OFFICE

P.O.Box 293705, Dubai Airport Free Zone L.L.U. J-12, Dubai, U.A.E  
Phone: +971-4-299-5900 Fax: +971-4-299-5901