



TOPCON OFFISS LENS

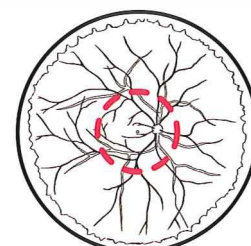
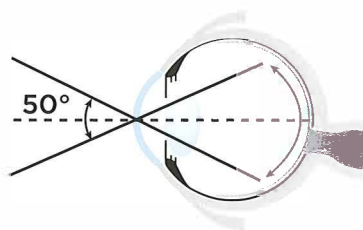
OFFISS



TOPCON has developed a state-of-art observation system for vitrectomy procedures that does not require the use of fiberoptic illumination. The TOPCON OFFISS system does not require the complicated focusing since the microscope head and the front lens move independently of each other facilitating clear focus in virtually any situation. The image inverter will activate automatically whenever the OFFISS is in use. The front lens can be easily replaced with a simple operation, saving time and increasing efficiency. Also, the new 80D and 120DS front lenses expand the selection for the various needs of retinal surgery. All front lenses are now autoclavable so shorter sterilization time (about 5 min.) is required for a more efficient performance of the surgical suite.

» 40D Lens

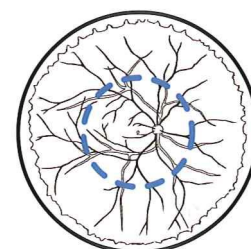
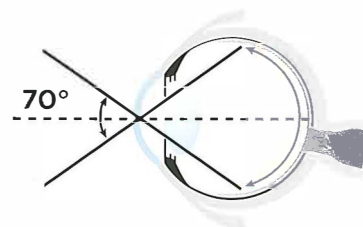
Excellent stereoscopy and a bright image are the characteristics of the 40D lens, making it suitable for procedures in the posterior segment. The microscope illumination enables the observation of the retina, making unnecessary the use of a fiber optic illumination. The result is that the surgeon is able to perform bimanual procedures, saving time.



Vascular Arcade

» 80D Lens

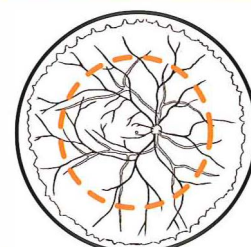
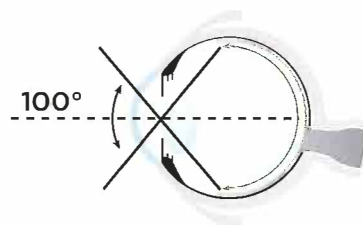
The observation from posterior segment to the intermediate peripheral zone of retina is possible with the 80D lens. This lens can also be used in combination with fiber optic illumination.



Intermediate peripheral zone

» 120DS Lens

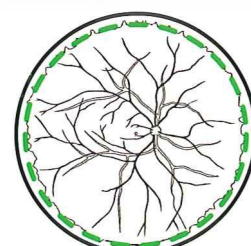
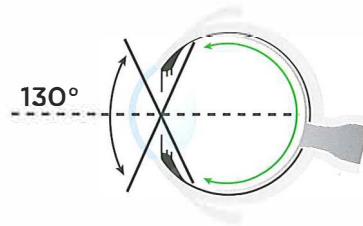
This compact lens of smaller size takes less space in the operating field and does not interfere with the use of surgical instruments. A wide angle observation of up to 100 degrees is possible under normal conditions. If air substitution is used, the angle can be expanded up to approximately 130 degrees.



Equator

» 120D Lens

Useful for vitreous surgery and photocoagulation of the central and peripheral areas up to the Ora Serrata, the 120D lens provides a field of view of 130 degrees with good stereoscopic image. This lens can be used under air substitution in combination with a wide angle fiber optic endoilluminator.



Ora Serrata