



# Experience Maestro2<sup>1</sup>

Advanced **Robotic OCT**,  
More Efficient, More Informative



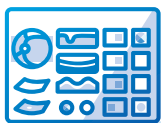
**HIGH RESOLUTION  
OCT IMAGE**



**ROBOTIC<sup>2</sup> OCT**



**TRUE COLOR  
FUNDUS IMAGE<sup>3</sup>**



**3D WIDE 12x9mm  
SCAN REPORT**

new



**FOLLOW UP SCAN**

new



**OCT ANGIOGRAPHY<sup>4</sup>**

**3DOCT-1 Maestro2**  
3D OPTICAL COHERENCE TOMOGRAPHY



**TOPCON HARMONY**  
THE ALL-NEW DATA MANAGEMENT SOLUTION

[www.TopconHarmony.com](http://www.TopconHarmony.com)

**TOPCON**

YOUR VISION. OUR FOCUS.

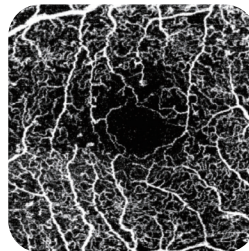
1. Not available for all countries. Please check with your local distributor for availability.  
2. Auto alignment, auto focus, auto capture.  
3. True/full Color fundus image, white light, 24-Bit color.  
4. OCT Angiography is optional.

# Maestro2 DEBUT

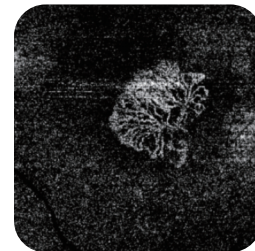
OCT Angiography at Your Fingertips



**3 x 3 mm**  
Superficial, Mild NPDR<sup>5</sup>



**6 x 6 mm**  
Outer Retina, CNV<sup>5</sup>



## Specifications

3D OCT-1 (Type: Maestro2)

<b>Observation &amp; Photography of Fundus Image</b>	
Photography type	Color, Red-free <sup>6</sup> & IR <sup>7</sup>
Picture Angle	45°±5% or less
	30° or equivalent (digital zoom)
Operating Distance	34.8±0.1mm (when taking a picture of fundus)
Photographable Diameter of Pupil	Normal pupil diameter : φ4.0mm or more Small pupil diameter : φ3.3mm or more
<b>Observation &amp; photographing of the fundus tomogram</b>	
Scan Range	Horizontal direction 3-12mm ±5% or less Vertical direction 3-9mm ±5% or less
Scan Pattern	3D scan (horizontal/vertical) Linear scan (Line-scan/Cross-scan/Radial-scan)
Scan Speed	50,000 A-Scans per second
Lateral Resolution	20µm or less
In-depth Resolution	6µm or less
Photographable diameter of Pupil	φ2.5mm or more
Internal Fixation Target	Dot matrix type organic EL (The display position can be changed and adjusted. The presenting method can be changed.)
<b>Electric Rating</b>	
Source Voltage	AC 100-240V
Power Input	70-150VA
Frequency	50Hz-60Hz
<b>Dimensions and Weight</b>	
Dimensions	340-480mm (W) x 543-680mm (D) x 530-735mm (H)
Weight	25kg
<b>Observation &amp; photographing of anterior segment</b>	
Photography type	Color & IR <sup>7</sup>
Operating Distance	62.6±0.1mm (when taking a picture of anterior segment) <sup>8</sup>
<b>Observation &amp; photographing of the anterior segment tomogram</b>	
Scan Range (on cornea) <sup>8</sup>	Horizontal direction 3-6mm ±5% or less Vertical direction 3-6mm ±5% or less
Scan pattern	Linear scan (Line-scan/Radial-scan)
External fixation target	External fixation target

Maestro2 = Product name: 3D Optical Coherence Tomography 3D OCT-1 (Type: Maestro2)

- Courtesy: Prof.Siamak Ansari Shahrezaei, Karl Landsteiner Institute for Retinal Research and Imaging
  - Digital red-free photography that processes a color image and displays it in pseudo-red-free condition
  - This is used only for recording the position where a tomogram is captured
  - When the attachment for anterior segment is included in the system configuration
- \*Subject to change in design and/or specifications without advanced notice.



**IMPORTANT** In order to obtain the best results with this instrument, please be sure to review all user instructions prior to operation.

## TOPCON CORPORATION

75-1 Hasunuma-cho, Itabashi-ku, Tokyo 174-8580, Japan. Phone:+81-(0)3-3558-2522/2502 Fax:+81-(0)3-3965-6898 www.topcon.co.jp

### TOPCON MEDICAL SYSTEMS, INC.

111 Bauer Drive, Oakland, NJ 07436, U.S.A.  
Phone:+1-201-599-5100 Fax:+1-201-599-5250 www.topconmedical.com

### TOPCON HEALTHCARE SOLUTIONS, INC.

111 Bauer Drive, Oakland, NJ 07436, U.S.A.  
Phone:1-201-599-5100 Fax:1-201-599-5250 www.topconhealth.com

### TOPCON CANADA INC.

110 Provencher Avenue, Boisbriand, QC J7G 1N1 CANADA  
Phone:+1-450-430-7777 Fax:+1-450-430-6457 www.topcon.ca

### TOPCON EUROPE MEDICAL BV

Essebeek II, 2909 LJ Capelle a/d IJssel, P.O.Box145,  
2900 AC Capelle a/d IJssel, THE NETHERLANDS  
Phone:+31-(0)10-4585077 Fax:+31-(0)10-4585045  
E-mail: medical@topcon.eu; www.topcon-medical.eu

### ITALY OFFICE

Viale dell'Industria 60, 20037 Paderno Dugnano, (Milano), ITALY  
Phone:+39-02-9186671 Fax:+39-02-91081091 E-mail: info@topcon.it; www.topcon.it

### DANMARK OFFICE

Praestemarksvej 25, 4000 Roskilde, DANMARK  
Phone:+45-46-327500 Fax:+45-46-327555  
E-mail: topcon@topcondanmark.dk www.topcondanmark.dk

### IRELAND OFFICE

Unit 276, Blanchardstown, Corporate Park 2 Ballycoolin Dublin 15, IRELAND  
Phone:+353-18975900 Fax:+353-18293915 E-mail: medical@topcon.ie; www.topcon.ie

### TOPCON FRANCE MEDICAL S.A.S.

BAT A1, 3 route de la roquette, 93206 Saint Denis Cedex, France  
Phone:+33-1-49212323 Fax:+33-1-49210494 E-mail:topcon@topcon.fr; www.topcon.fr

### TOPCON DEUTSCHLAND MEDICAL G.m.b.H.

Hanns-Martin-Schleyer Strasse 4I, D-47877 Willich, GERMANY  
Phone:+49-(0)2154-8850 Fax:+49-(0)2154-885177 E-mail:med@topcon.de; www.topcon.de

### TOPCON SCANDINAVIA A.B.

Neongatan 2, P.O.Box 25, 43151 Molndal, SWEDEN  
Phone:+46-(0)31-7109200 Fax:+46-(0)31-7109249 E-mail:medical@topcon.se; www.topcon.se

### TOPCON ESPAÑA S.A.

HEAD OFFICE  
Frederic Mompou 4 Esc. A Bajos 3, 08960 Sant Just Desvern Barcelona, SPAIN  
Phone:+34-93-4734057 Fax:+34-93-4733932 E-mail:medica@topcon.es; www.topcon.es

### TOPCON (GREAT BRITAIN) MEDICAL LTD.

Topcon House, Kennet Side, Bone Lane, Newbury, RG14 5PX U.K.  
Phone:+44-1635-551120 Fax:+44-1635-551170 E-mail:medical@topcon.co.uk; www.topcon.co.uk

### TOPCON POLSKA Sp. z o.o.

ul. Warszawska 23, 42-470 Siewierz, POLAND  
Phone:+48-(0)32-6705045 Fax:+48-(0)32-6713405 www.topcon-polska.pl

### TOPCON SINGAPORE MEDICAL PTE. LTD.

1 JALAN KILANG TIMOR #09-01 PACIFIC TECH CENTRE SINGAPORE 159303  
Phone:+65-68720006 Fax:+65-67736150  
E-mail:medical\_sales@topcon.com.sg www.topcon.com.sg

### REPRESENTATIVE OFFICE IN INDONESIA

Level 38, Tower A, Kota Kasablanka unit GH-04, Jl. Casablanca, Kav 88, Jakarta, Indonesia 12870  
Phone:+62-21-2963-8004

### TOPCON INSTRUMENTS (MALAYSIA) SDN.BHD.

No. D1, (Ground Floor), Jalan Excella 2, Off Jalan Ampang Putra,  
Taman Ampang Hilir, 55100 Kuala Lumpur, MALAYSIA  
Phone:+60-(0)3-42709866 Fax:+60-(0)3-42709766

### TOPCON INSTRUMENTS (THAILAND) CO.,LTD.

77/162 Sinsathorn Tower, 3/rd Floor, Krungthoburi Rd, Klongtoensai,  
Klongsarn, Bangkok 10600, THAILAND  
Phone:+66(0)2-440-1152-7 Fax:+66-(0)2-440-1158

### Mehra Eyetech Private Limited

801 B Wing, Lotus Corporate Park, Graham Firth Steel Compound Goregaon (East)  
Mumbai 400063 Maharashtra, INDIA  
Phone:+91-22-61285455 www.mehraeyetech.in